

Mapatón Humanitario Zaragoza 2024



Universidad de Zaragoza

11 de abril de 2024 / 17:00 a 21:00



Presentación con materiales CC BY-SA del grupo Mapeado Colaborativo/Geoinquiets Zaragoza, La Comunidad de OpenStreetMap y Médicos Sin Fronteras España. Fondo Imagen de fondo Bing.



Departamento de
Geografía y
Ordenación del Territorio
Universidad Zaragoza



Mapeado Colaborativo
Geoinquiets Zaragoza

Presentación MSF



<https://youtu.be/178vpuXt2BI>



Juan José Arévalo
Médicos Sin Fronteras España

¿Qué es un Mapatón?

- Maratón de mapas = MAPATON
- Cartografía colaborativa
- Usando herramientas y datos libres
- OpenStreetMap + Imágenes alta resolución
- Fotointerpretación de elementos
- Usando el gestor de tareas de HOT

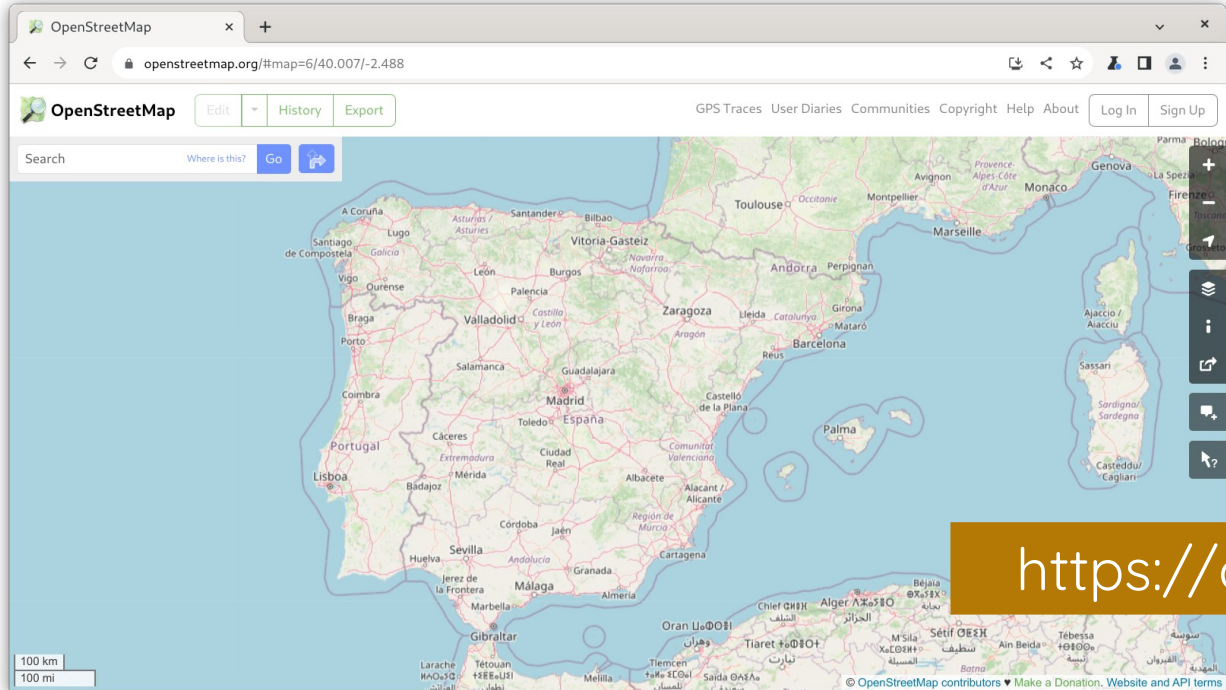


Mapatones



OpenStreetMap

la wikipedia de los mapas



<https://openstreetmap.org>

OpenStreetMap

la wikipedia de los mapas



“crear y distribuir datos geográficos libres de restricciones técnicas o legales de uso, promoviendo su utilización de forma creativa, productiva o inesperada”

... a partir de la contribución voluntaria y colaborativa de la comunidad

OpenStreetMap

la wikipedia de los mapas



- ~ 10.5 millones editores
- ~ 150 activos/día en España
- ~ 9.000 millones de nodos
- > 35.000 creados/día en España
- Base de datos espacial de libre uso y distribución (OdbL)

Datos: osmstats.neis-one.org

¿Qué es OpenStreetMap?



- comunidad de **entusiastas** del software y los datos libres
- proyecto para crear **la mejor base de datos geográfica mundial**
- ¿un mapa en la red? ¡No! ¡**son muchos mapas!**
- **no solo mapas:** ecosistema de productos y servicios

Leyenda (mapnik)



Leyenda del mapa

	Autopista
	Main road
	Pista
	Vía ecuestre
	Bicisenda
	Vía peatonal
	Ferrocarril
	Metro
	Metro ligero y Tranvía
	Telecabinas y Telesilla
	Pista de aeropuerto y Calle de rodaje
	Rampa

x

	y Calle de rodaje
	Rampa aeroportuaria y terminal
	Límites administrativos
	Bosque
	Madera
	Campo de golf
	Parque
	Zona residencial
	Común y pradera
	Zona de comercios
	Zona industrial
	Zona de oficinas
	Landa, brezal

	Zona de oficinas
	Landa, brezal
	Lago y embalse
	Campiña
	Baldío
	Cementerio
	Huertos de ocio
	Campo de juego
	Centro deportivo
	Reserva natural
	Área militar
	Escuela y universidad
	Edificio significativo
	Estación de tren
	Cumbre y pico
	Borde a rayas =

	Cumbre y pico
	Borde a rayas = túnel
	Borde negro = puente
	Acceso privado
	Acceso a destino
	Vías en construcción

Support the Guardian

Available for everyone, funded by readers

Contribute →

Subscribe →

Search jobs

Sign in

Search

International edition ▾

The Guardian

For 200 years

News

Opinion

Sport

Culture

Lifestyle

More ▾

World UK Coronavirus Climate crisis Environment Science Global development Football **Tech** Business Obituaries

Mapping technologies

Why the world needs OpenStreetMap

As more private companies offer us maps, we need an open-source, editable solution - a cartographical Wikipedia

Serge Wroclawski

Tue 14 Jan 2014 11.52

GMT

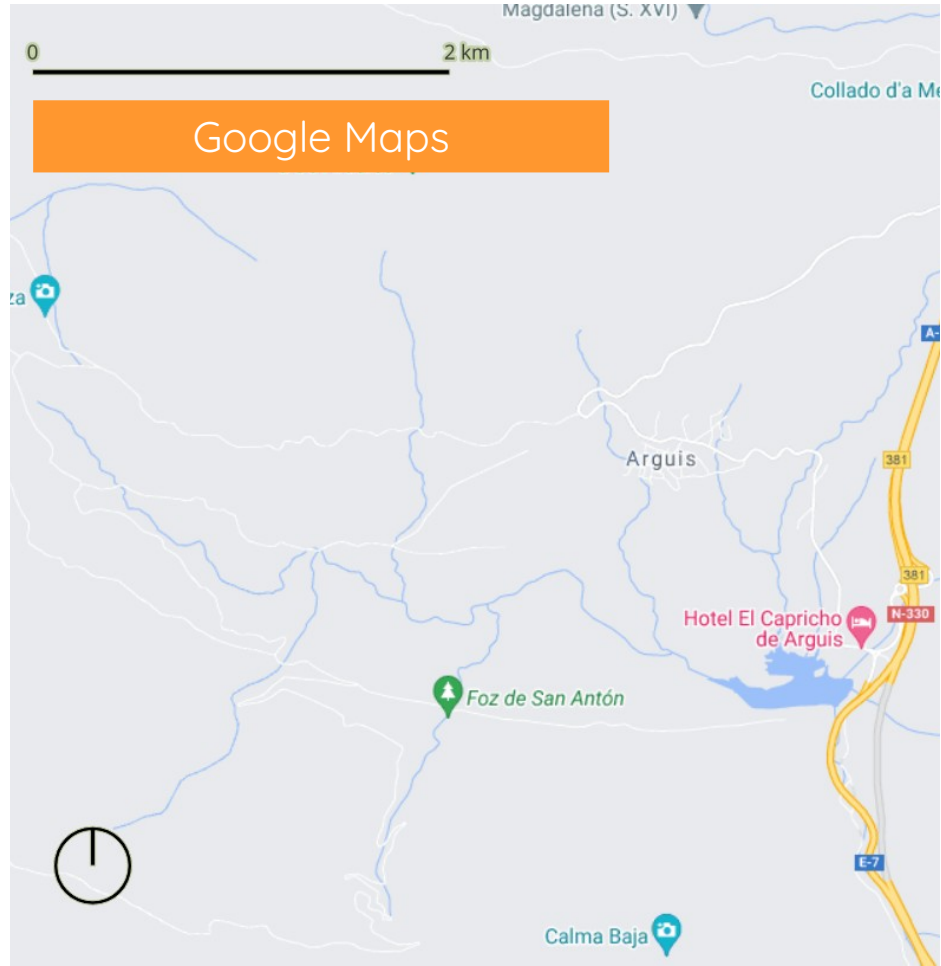
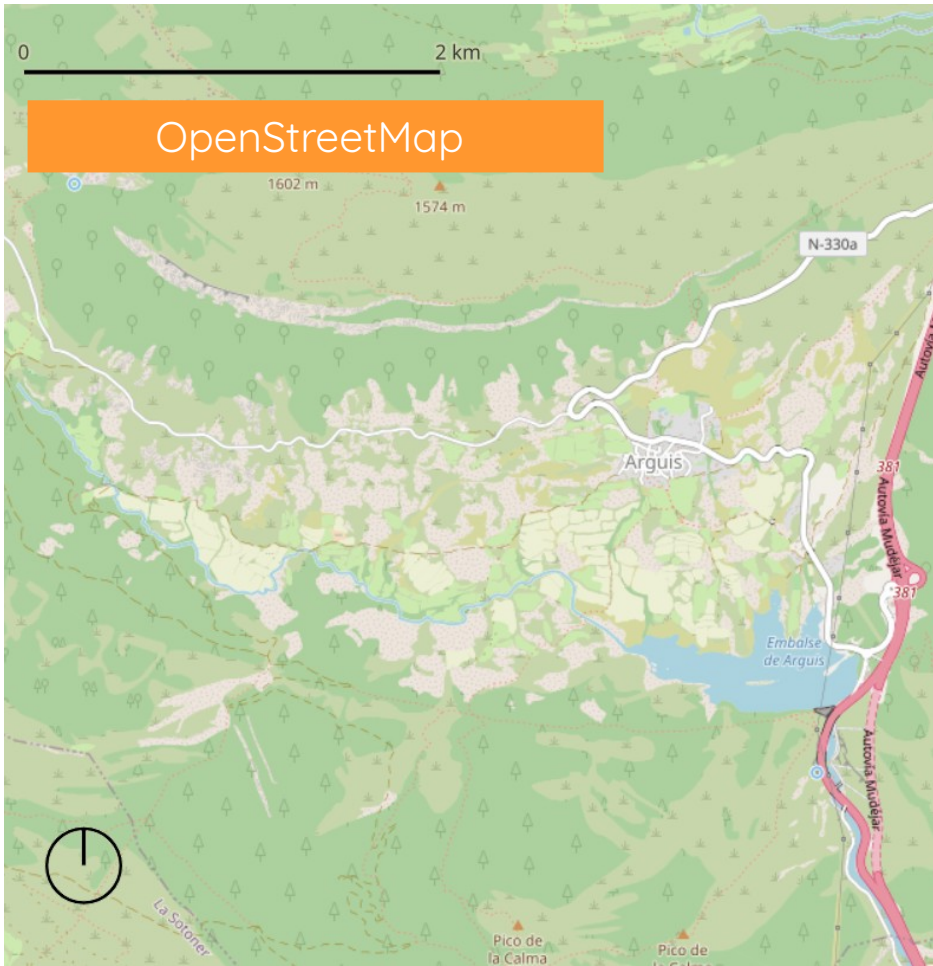
f t ✉️ 195



relevancia de OpenStreetMap

- ◆ alternativa a servicios de mapas online
- ◆ uso fundamental en áreas de **ayuda humanitaria**
- ◆ cartografía de **información geográfica alternativa**
- ◆ incorporación “open data” espacial
- ◆ plataforma de referencia de información geográfica libre





Lo mejor de OpenStreetMap
es su Comunidad llena de
entusiastas

Y tú también puedes ser
parte de ella



Procedimiento



Tasking Manager

- **Unirse a la comunidad**
 - Darse de alta como usuario de OpenStreetMap
- **Ir al gestor de tareas e identificarte**
- **Ir a el proyecto (tarea) sobre el que trabajar**
- **Elegir un polígono a editar**
- **Identifica y añade elementos sobre la imagen**
- **Cerrar la tarea (dejar mensaje)**

Tarea a realizar



Tasking Manager

Buildings in Mizoram State, India (10)

Tarea 16509

<https://tasks.hotosm.org/projects/16509/>



Contexto humanitario



MSF pretende proporcionar **atención médica y de salud mental gratuita y de calidad a las comunidades de la zona**, al tiempo que responde a cualquier emergencia médico-humanitaria que pueda producirse en el estado de Mizoram.

Las actividades incluyen **clínicas médicas móviles, apoyo en salud mental, apoyo en agua y saneamiento y distribución de artículos no alimentarios como utensilios de cocina y mantas.**





EXPLORE PROJECTS

MY CONTRIBUTIONS

LEARN

ABOUT

SUPPORT



msevilla00



#16509 | Médecins Sans Frontières (MSF)

MEDIUM

MISSING MAPS: BUILDINGS IN MIZORAM STATE, INDIA (10)

MizoramState · India · refugee response, public health

READ MORE

TYPES OF MAPPING



IMAGERY

ESRI World Imagery

6 contributors

Last contribution 4 hours ago

Easy

No due date specified



Mapping our world together

Humanitarian OpenStreetMap Team Website



EXPLORE PROJECTS

MY CONTRIBUTIONS

LEARN

ABOUT

SUPPORT



msevilla00

#16509 | Médecins Sans Frontières (MSF)

MEDIUM

MISSING MAPS: BUILDINGS IN MIZORAM STATE, INDIA (10)

MizoramState · India · refugee response, public health

READ MORE

TYPES OF MAPPING



IMAGERY

ESRI World Imagery

6 contributors

Last contribution 4 hours ago

Easy

No due date specified



Overview · Description · Coordination · Teams & Permissions · Questions and comment

Share

Add to Favorite



Contribute



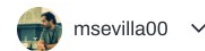
EXPLORE PROJECTS

MY CONTRIBUTIONS

LEARN

ABOUT

SUPPORT



#16509 | Médecins Sans Frontières (MSF)

MEDIUM

MISSING MAPS: BUILDINGS IN MIZORAM STATE, INDIA (10)

MizoramState · India

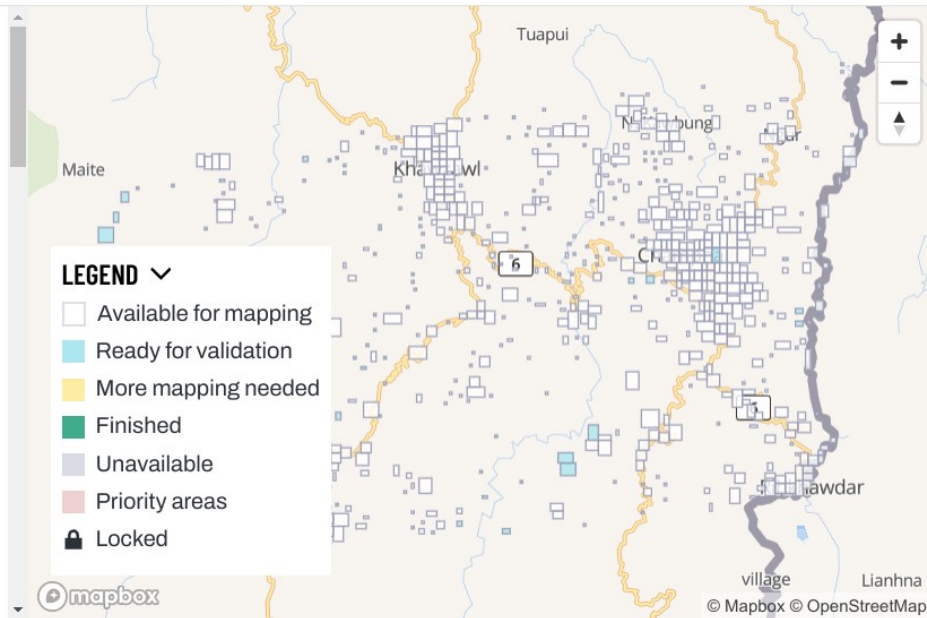
TASKS INSTRUCTIONS CONTRIBUTIONS

To help you mapping, we have made you a guide with photos where you can learn about the different types of buildings in the region. Find the guide [here](#)

Imagery

Please use **Esri World Imagery** to map this project. It is the most recent imagery available.

If there is a misalignment between the imagery and the existing data, please



TYPES OF MAPPING



IMAGERY

ESRI World Imagery

EDITOR

iD Editor

Map a task



EXPLORE PROJECTS

MY CONTRIBUTIONS

LEARN

ABOUT

SUPPORT



msevilla00



#16509 | Médecins Sans Frontières (MSF)

MEDIUM

MISSING MAPS: BUILDINGS IN MIZORAM STATE, INDIA (10)

MizoramState · India

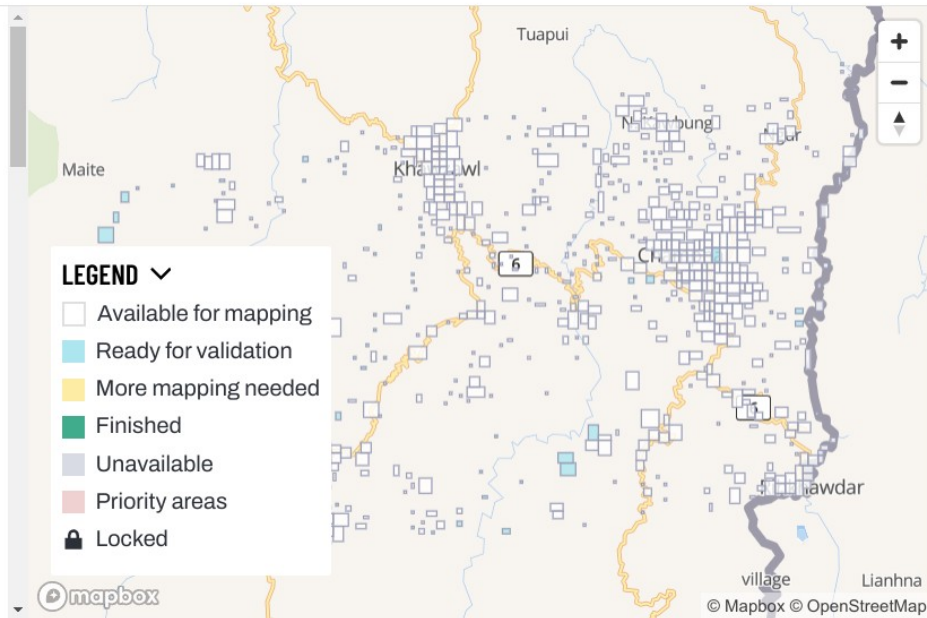
TASKS INSTRUCTIONS CONTRIBUTIONS

To help you mapping, we have made you a guide with photos where you can learn about the different types of buildings in the region. Find the guide [here](#)

Imagery

Please use **Esri World Imagery** to map this project. It is the most recent imagery available.

If there is a misalignment between the imagery and the existing data, please



TYPES OF MAPPING



IMAGERY

ESRI World Imagery

EDITOR

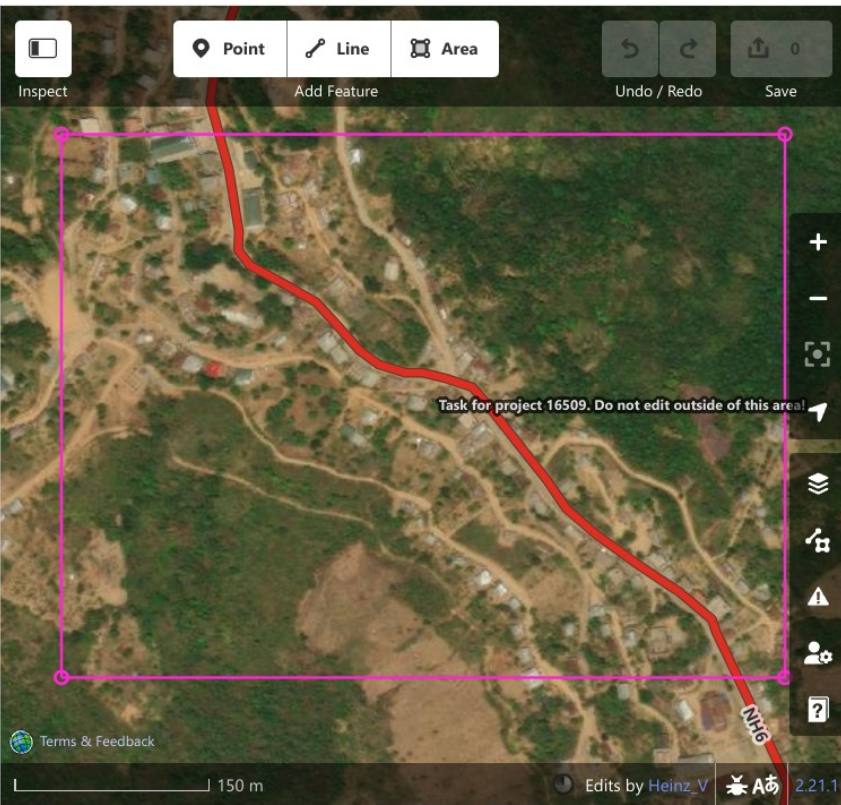
iD Editor



Map a task

Search features


🔍 Search



Inspect Point Line Area Undo / Redo Save

Task for project 16509. Do not edit outside of this area!

Terms & Feedback | 150 m | Edits by Heinz_V | 2.21.1

#16509 | Médecins Sans Frontières (MSF) 

MISSING MAPS: BUILDINGS IN MIZORAM STATE, INDIA (10) · #495

🕒 2 hours left



COMPLETION INSTRUCTIONS HISTORY [>](#)

▼ **SPECIFIC TASK INFORMATION**

For validators: Occasionally there are buildings outside the task boxes, please map them too.

TASK STATUS [?](#)

Is this task completely mapped?

Yes

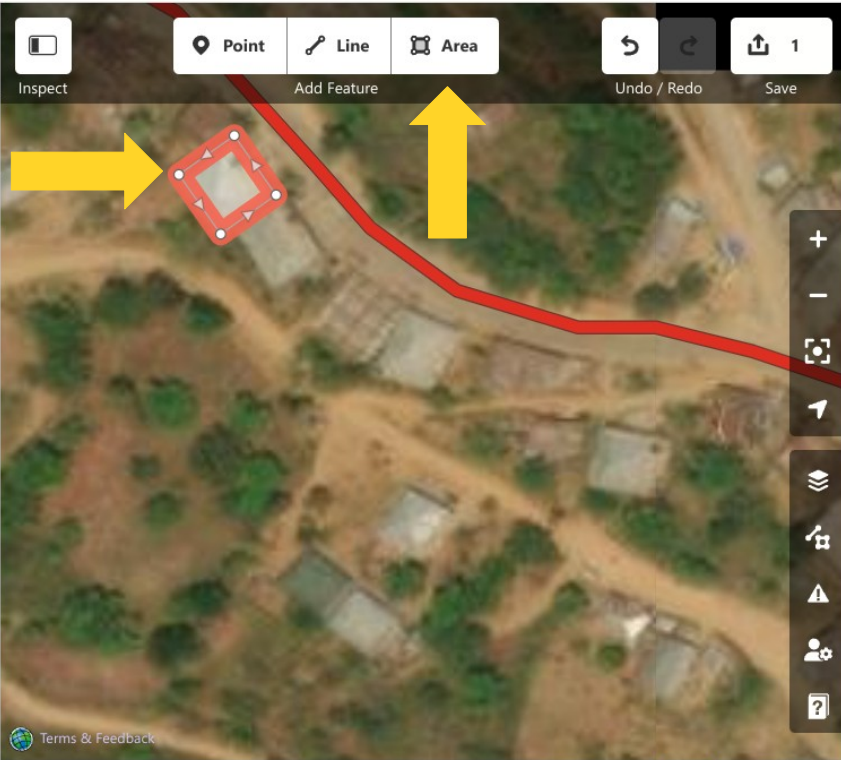
Select feature type >

Inspect Add Feature Undo / Redo Save 1

Point Line Area

Search

Building i



#16509 | Médecins Sans Frontières (MSF)

MISSING MAPS: BUILDINGS IN MIZORAM STATE, INDIA (10) · #495

1 hour, 59 minutes left

COMPLETION INSTRUCTIONS HISTORY >

SPECIFIC TASK INFORMATION

For validators: Occasionally there are buildings outside the task boxes, please map them too.

TASK STATUS ?



Is this task completely mapped?

Yes

Upload to OpenStreetMap


Changeset Comment  

#hotosm-project-16509 Mapped buildings in #mizoramstate in India for #msf #missingmaps

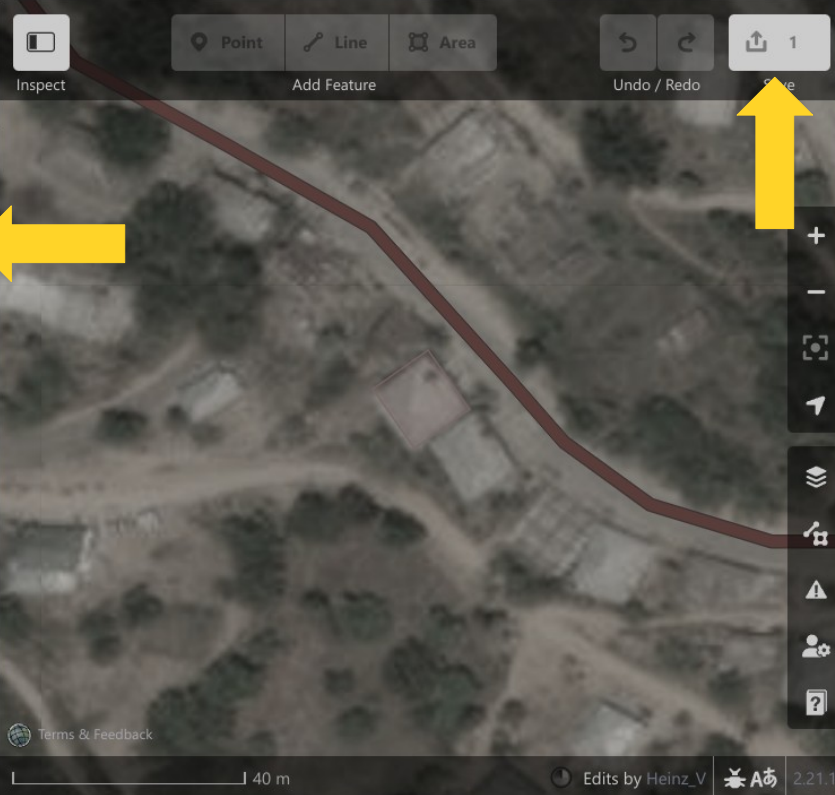
Hashtags  

- #hotosm-project-16509 x
- #mizoramstate x #msf x
- #missingmaps x #example...

Add field: Sources

The changes you upload as  msevilla00 will be visible on all maps that use OpenStreetMap data.

I would like someone to review my edits.



COMMENT

Write Preview

B I     

Leave a comment...

[#managers](#), [#author](#), [#contributors](#)

Submit task

Split task

Select another task

RELOAD EDITOR

iD Editor

Tasks map

Upload to OpenStreetMap

Changeset Comment

#hotosm-project-16509 Mapped buildings in #mizoramstate in India for #msf #missingmaps

Hashtags

- #hotosm-project-16509
- #mizoramstate
- #msf
- #missingmaps
- #example...

Add field: Sources

The changes you upload as msevilla00 will be visible on all maps that use OpenStreetMap data.

I would like someone to review my edits.

COMMENT

Write Preview

B I [Link] [List] [List] @ [Image]

Leave a comment...

managers, #author, #contributors

Submit task

Split task





Select another task

RELOAD EDITOR

iD Editor

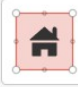

Tasks map

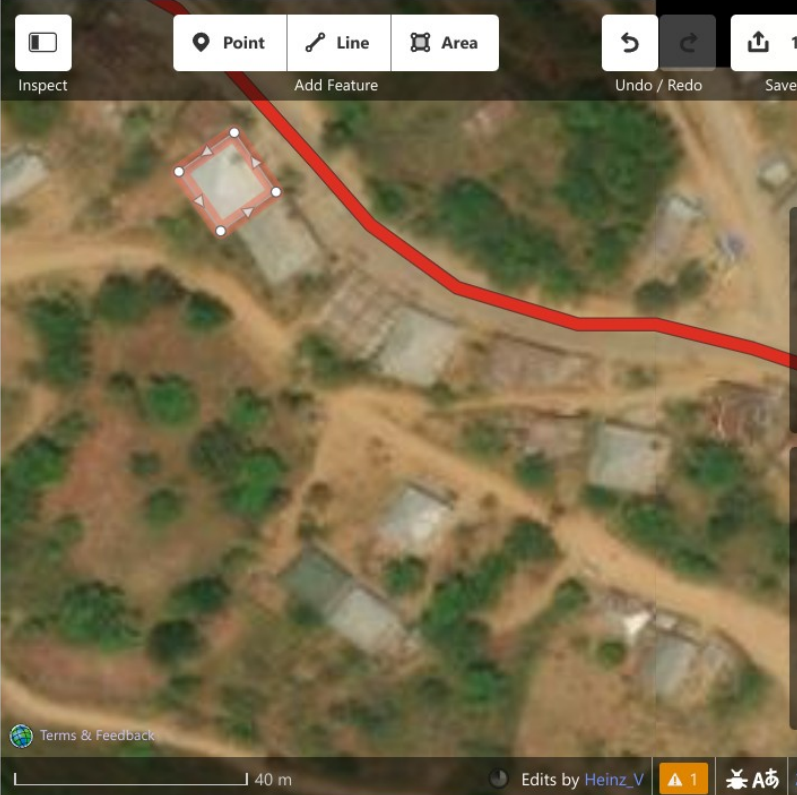
Select feature type >

 **Point** **Line** **Area**   

Inspect Add Feature Undo / Redo Save

Search

 **Building** 








TASK STATUS ?

Is this task completely mapped?

- Yes
- No
- The imagery is bad

COMMENT

Write Preview

B I      

Leave a comment...



EXPLORE PROJECTS

MY CONTRIBUTIONS

LEARN

ABOUT

SUPPORT



msevilla00

#16509 | Médecins Sans Frontières (MSF)

MEDIUM

MISSING MAPS: BUILDINGS IN MIZORAM STATE, INDIA (10)

MizoramState · India

TASKS INSTRUCTIONS CONTRIBUTIONS

To help you mapping, we have made you a guide with photos where you can learn about the different types of buildings in the region. Find the guide [here](#)

Imagery

Please use **Esri World Imagery** to map this project. It is the most recent imagery available.

If there is a misalignment between the imagery and the existing data, please

LEGEND

- Available for mapping
- Ready for validation
- More mapping needed
- Finished
- Unavailable
- Priority areas
- Locked

mapbox © Mapbox © OpenStreetMap

TYPES OF MAPPING



IMAGERY

ESRI World Imagery

EDITOR

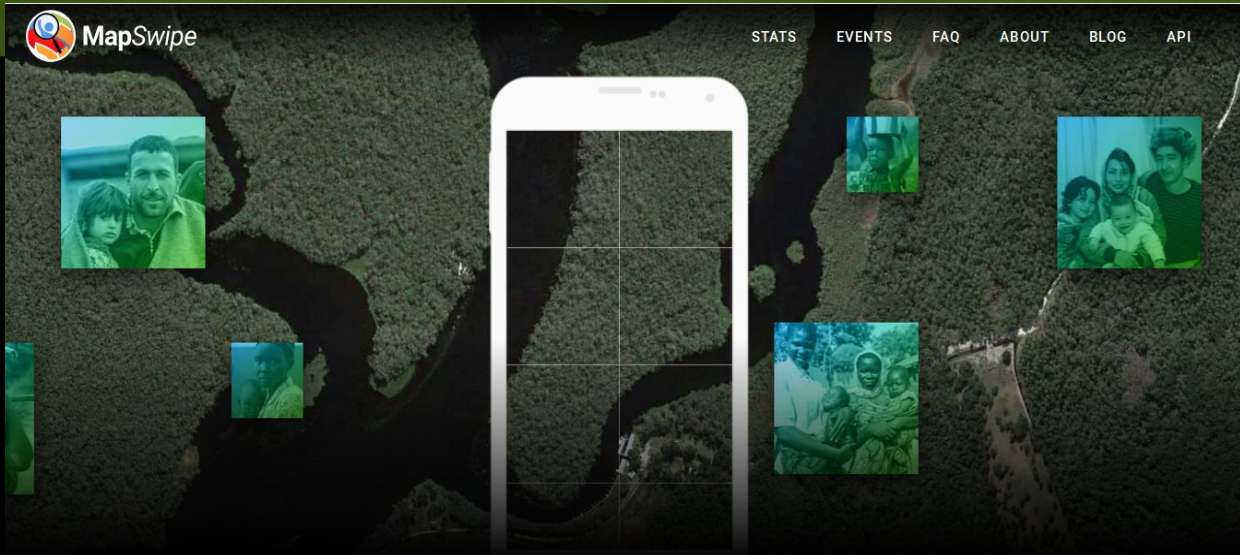
ID Editor



Map a task

MapSwipe

<https://mapswipe.org>



With every swipe and tap, you help put families on the map



[Click here for a direct APK download](#)

Map Swipe

<https://mapswipe.org>

Missions More

NEEDS MAPPING

Measles vaccination Chad 3
57% by 397mappers

NEEDS MAPPING

NEEDS MAPPING

Sehitkamil Turkey Refugee
23% by 64mappers

NEEDS MAPPING

NEEDS MAPPING

Gaziantep Turkey Refugees
93% by 126mappers

MEASLES VACCINATION CHAD 3

57% GLOBAL PROGRESS BY 397 MAPPERS JUST LIKE YOU. Missing Maps

At this current moment Médecins Sans Frontières (MSF) is undertaking a mass vaccination campaign against measles in the Am Timan region in Chad. The goal is to vaccinate all children below the age of 10. People will come to a vaccination point in a key village in their area to receive a vaccine against measles. After the campaign a vaccine coverage survey will be set up to understand if we effectively vaccinated enough children in every village to prevent a measles outbreak. Your swiping is helping MSF in detecting all the villages in the area, and will reassure us that we cover all villages in our survey.

Tutorial

You are looking for: Buildings

How To Contribute

TAP TO SELECT

Search the image for features listed in your mission brief. Tap each tile where you find what you're looking for. Tap once for **YES**, twice for **MAYBE**, and three times for **BAD IMAGERY** (such as clouds).

SWIPE TO NAVIGATE

When you feel confident you are done with a piece of the map, scroll to the next one by simply swiping.

HOLD TO ZOOM

Hold a tile to zoom in on the tile.

I understand

START MAPPING

You are looking for: buildings

Your effort is helping!

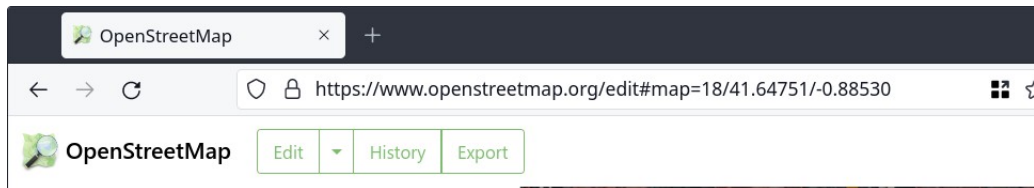
YOU'VE MAPPED 34%

RECUERDA

No copies de otros
mapas o fuentes
sin autorización



editor iD



Edit feature

Inspect Add Feature

Point Line Area

Undo / Redo Save

Feature Type

University Grounds i

Fields

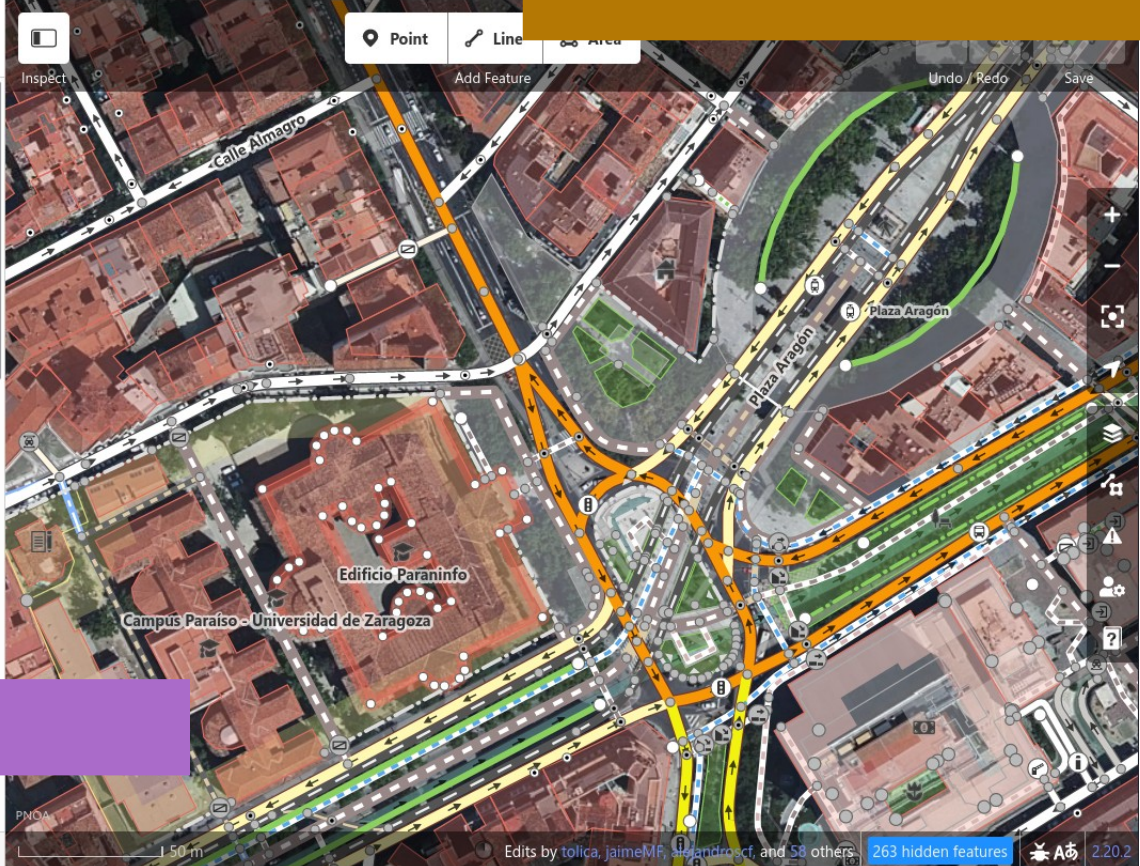
Name i
Edificio Paraninfo +

Operator i
Unknown

Address i
Street 123 Unit
Postcode City

Website i

View on openstreetmap.org



editor web



editor JOSM

Tags/Memberships

Select objects for which to change tags.

+ Add Edit Delete

Selection

Select Search History

Relations: 151

- associatedStreet ("Calle de Felipe Sandr...
- boundary[8] ("Parroquia del Corazón de...
- boundary[8] ("Parroquia de Santa Engra...
- boundary[8] ("Zaragoza", 39 members, in...

editor externo Java

Modelo datos geográficos



a. componente espacial

tipologías básicas

- nodos / nodes
- líneas / ways



b. componente temático

etiquetas y valores

- shop=bakery
- name=Panadería Alonso



c. relaciones y conjuntos



¿dónde?
¿qué forma?
¿qué es?
¿cómo se relaciona?



Main Page Discussion

Read View source View history

Search OpenStreetMap Wiki

Main Page - Other languages

Afrikaans asturianu azərbaycanca Bahasa Indonesia Bahasa Melayu bosanski brezhoneg català čeština dansk Deutsch eesti **English** español Esperanto euskara français Frysk galego hrvatski interlingua íslenska italiano kréyòl gwadloupéyen kurdî latviešu Lëtzebuergesch lietuvų magyar Nederlands norsk occitan polski portugalski română shqip slovenčina slovenščina srpski (latinica) suomi svenska Tiếng Việt Türkçe Zazaki Ελληνικά български македонски русский српски / srpski українська հայերեն עברית العربية فارسی हिन्दी ਪੰਜਾਬੀ ਪੰਜਾਬੀ ਸਰਾਇਕੀ سرانیکي سنڌو سنڌو नेपाली मराठी বাংলা ଇଂରାଜୀ ལྷོ་ཁུ་བྱོ་སྐད་ ལྷོ་ཁུ་བྱོ་སྐད་ ལྷོ་ཁུ་བྱོ་སྐད་ 한국어 中文 (简体) 中文 (繁體) 日本語

Other languages...

- Main Page
- The map
- Map Features
- Contributors
- Help
- Blogs
- Shop
- Donations
- Wiki discussion
- Recent changes
- Tools
- What links here
- Related changes
- Special pages
- Printable version
- Permanent link
- Page information
- Cite this page

Welcome to OpenStreetMap, the project that creates and distributes [free](#) geographic data for the world. We started it because most maps you think of as free actually have legal or technical restrictions on their use, holding back people from using them in creative, productive, or unexpected ways.



More about OpenStreetMap | How to contribute | Where to get help

Use OpenStreetMap



Using OpenStreetMap

- Browse our world map
- Check the ready-to-use products for your mobile device, your desktop computer or the web services

Contribute free map data



Beginners' Guide

- Browse the map feature documentation
- Browse the Mapping projects
- ...more on contributing map data

Software Development



Develop and use the Platform

- Use OpenStreetMap for your software
- Contribute to the OpenStreetMap software



- Main Page
- The map
- Map Features
- Contributors
- Help
- Blogs
- Shop
- Donations
- Wiki discussion
- Recent changes
- Tools
- What links here
- Related changes
- Special pages
- Printable version
- Permanent link
- Page information
- Cite this page

Page Discussion

Read

View source

View history

Search OpenStreetMap Wiki



Map Features Elementos del mapa

Map features

tagging tagging

Map Features - Other languages

Purge · Help

asturianu azərbaycanca Bahasa Indonesia bosanski català čeština dansk Deutsch eesti English español Esperanto français hrvatski isleńska italiano latviešu lietuvių magyar Nederlands norsk occitan polski português română shqip slovenčina slovenščina suomi svenska Tiếng Việt Türkçe Ελληνικά български македонски русский српски / srpski українська עברית العربية الفارسية پنجابی नेपाली ਪੰਜਾਬੀ မြန်မာဘာသာ 한국어 ქართული 中文 (简体) 中文 (繁體) 日本語

Other languages...

OpenStreetMap represents [physical features on the ground](#) (e.g., roads or buildings) using [tags](#) attached to its basic data structures (its [nodes](#), [ways](#), and [relations](#)). Each tag describes a geographic attribute of the feature being shown by that specific node, way or relation.

OpenStreetMap's [free tagging system](#) allows the map to include an unlimited number of attributes describing each feature. The community agrees on certain key and value combinations for the most commonly used tags, which act as informal standards. However, users can create new tags to improve the style of the map or to support analyses that rely on previously unmapped attributes of the features. Short descriptions of tags that relate to particular topics or interests can be found using the [feature pages](#).

Most features can be described using only a small number of tags, such as a path with a classification tag such as [highway=footway](#), and perhaps also a name using [name=*](#). But, since this is a worldwide, inclusive map, there can be many different feature types in OpenStreetMap, almost all of them described by tags.

There are [proposed changes to existing tags](#), [inactive features](#) and [deprecated features](#). If you do not find a suitable tag in this list then feel free to make something suitable up as long as the [tag values will be verifiable](#). Over time, you may find that the tag name is changed to fit with some wider consensus. However, many good tags were used first and documented later. For the latest updates of tagging schemes see [Changelog](#).

Contents [hide]

1 Primary features

1.1 Aerialway

1.2 Airways

Editando en iD



- Seguir el tutorial

A screenshot of the iD OpenStreetMap editor's welcome screen. The screen is white with a dark background showing a map. At the top, it says "Welcome to the iD OpenStreetMap editor". Below that, it says "iD is a friendly but powerful tool for contributing to the world's best free world map. This is version 2.28.1. For more information see [changelog](#) and report bugs at [github.com](#)." Then, "Our privacy policy has recently been updated. By using this software, you agree to do so in accordance with the [iD privacy policy](#)." Below this is a section titled "Your Privacy Settings" with a checkbox for "Show Third Party Icons" which is checked. At the bottom, there are two buttons: "Start the Walkthrough" (with a blue icon of a map and a dashed line) and "Edit now" (with a blue icon of a map and a location pin). The "Start the Walkthrough" button is highlighted with an orange rounded rectangle. At the bottom of the screen, it says "300 m" and "Edits by: cronosier, msevilla00, sanchi, and 2".

Search features

🔍 Search

Welcome! This walkthrough will teach you the basics of editing on OpenStreetMap.

OK



Inspect

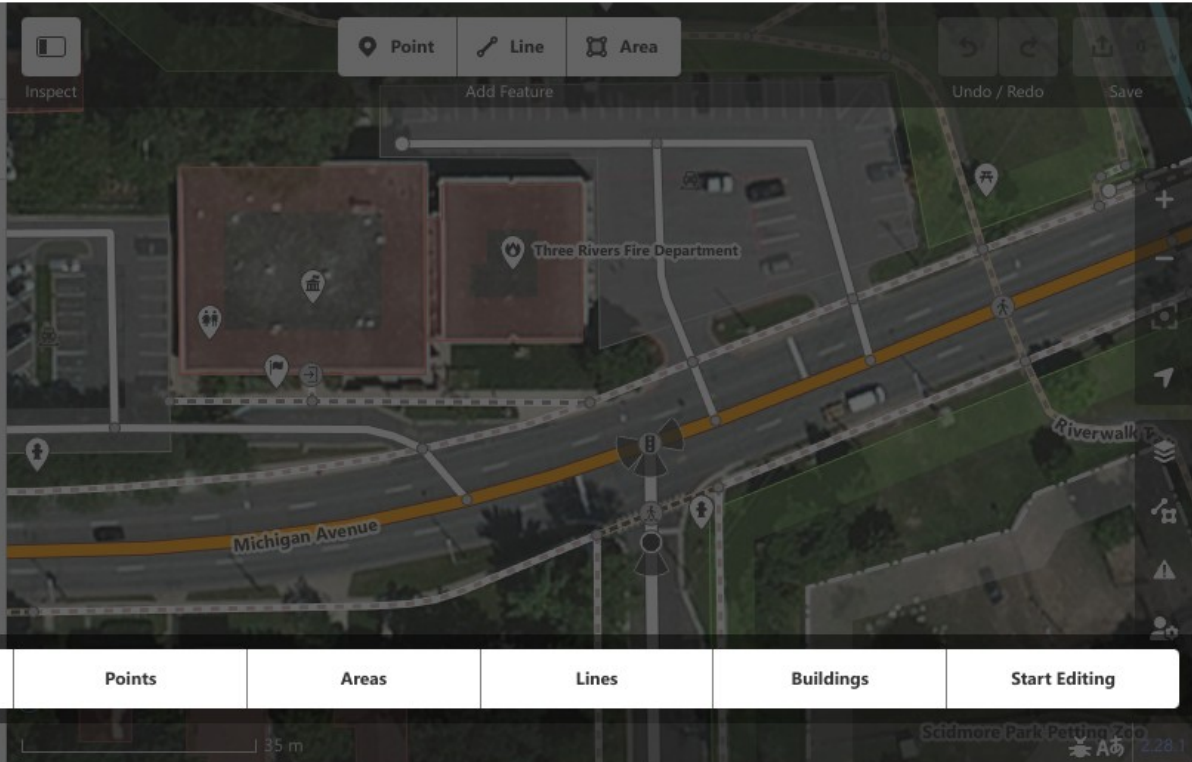


Add Feature



Undo / Redo

Save



Welcome

Navigation

Points

Areas

Lines

Buildings

Start Editing

35 m

Scidmore Park Pettun Zoo



2.28

Search features

Search



Start mapping!

Undo / Redo

Save

Camino Farlete

Acquedotto di Camarero

Search features

Search

Help

street-level photos. Copying from commercial sources, like Google Maps, is strictly forbidden.

Before you start

You should be familiar with OpenStreetMap and this editor before you start editing. iD contains a walkthrough to teach you the basics of editing OpenStreetMap. Press the "Start the Walkthrough" button on this screen to start the tutorial—it takes only about 15 minutes.

Open Source

The iD editor is a collaborative open source

[Notes](#)

[Background Imagery](#)

[Street Level Photos](#)

[GPS Traces](#)

[Quality Assurance](#)

[Keyboard Shortcuts](#)

Start the Walkthrough

300 m Edits by msevilla00, sidvicio, jmgarcia, and 25 others 434 hidden features 2.28.1

Consejos



- Ante la duda no lo toques
- No edites para el render
- Comenta tus ediciones
- Algunas líneas comparten nodos otras NO
- Consulta la documentación
- Pregunta a la comunidad

La comunidad está
llena de
entusiastas listos
para prestar ayuda



Busca ayuda



- Foro de la comunidad

<https://community.openstreetmap.org/c/communities/es/51>

- Lista de correo

<https://lists.openstreetmap.org/listinfo/talk-es>

- Mensajería instantánea

Telegram y Matrix

- Grupos OSM & Geoinquietos

<https://mapcolabora.org>



<https://wiki.openstreetmap.org/wiki/ES:Espa%C3%B1a#Contacto>